



*Your Friendly Building partner in finding solutions*

# ***PRECAST CONCRETE ELEMENTS for SMARTER CONSTRUCTION***

***From A Company with  
UNIQUE TECHNOLOGY EXPERTISE***



# WHO WE ARE

***BUILDMATE PRECAST is a division of Buildmate Projects Pvt Ltd for factory made Precast Buildings / Elements.***

*We build long term relationships out of honesty, and trust – that's the legacy of BUILDMATE. Since 1985 being Pioneers , who brought the awareness in Hyderabad and built on unrelenting adherence to our values, the core of which are Quality, Integrity and Innovative Approach.*

- *Production / Manufacturing Units: Hyderabad , TELANGANA*
- *Buildmate is an ISO certified company.*
- *Buildmate is having a strong background in Engineering, Project Management, Manufacturing Infrastructure and Proven Technology.*
- *SMART IMPORT SUBSITUTE PLANT & MACHINERY SOLUTIONS FOR BUILDING MATERIAL PROJECTS - AAC Block Plants, Precast Plants, Concrete Block Plants, , Dry Mix Mortar Plants etc.*

*BUILDMATE ensures the Best and consistent Quality with long-lasting Precast products / solutions in line with requirements of all type of Industrial, commercial, Institutional and residential Projects.*

*Our design & manufacturing facilities are ISO certified. The high precision equipment installed in manufacturing facility is programmed to deliver better quality manufacturing of the products. Rigorous quality norms ensure in-time product delivery with high technology concrete.*

# Company Infrastructure



*All our offsite manufacturing processes are done in a more controlled environment. We have the state of art Precast Production facility meeting international standards. We adopt only 100 % eco-friendly practices and are also well equipped to provide third party certification for all our samples.*

- Our Manufacturing unit is situated amidst Hyderabad and can cater to clients situated in surrounding demographic locations.*
- The Company is situated on an Industrial land of 27000 sqm and has 100000 square feet of workshops and related buildings for Manufacturing.*
- We maintain a modern and well-developed Precast production facility comprising of advanced technology-based production machinery.*
- We have Highly Experienced well-trained team of engineers, Production staff & skilled workforce which provides customized solutions to our clients.*
- Our in- house design unit works in close coordination with the CAD/CAM unit and thus, results in expert designing to our clients*

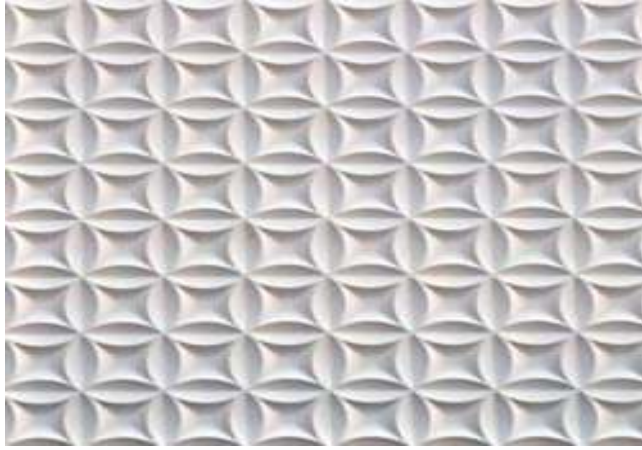
# Precast Concrete Products

## Precast Wall Solutions

**COMPOUND / BOUNDARY WALLS** "made-to-measure" with both sides mold finish and adapted to your all type of construction needs.

- Industrial,
- Residential,
- Architectural designer





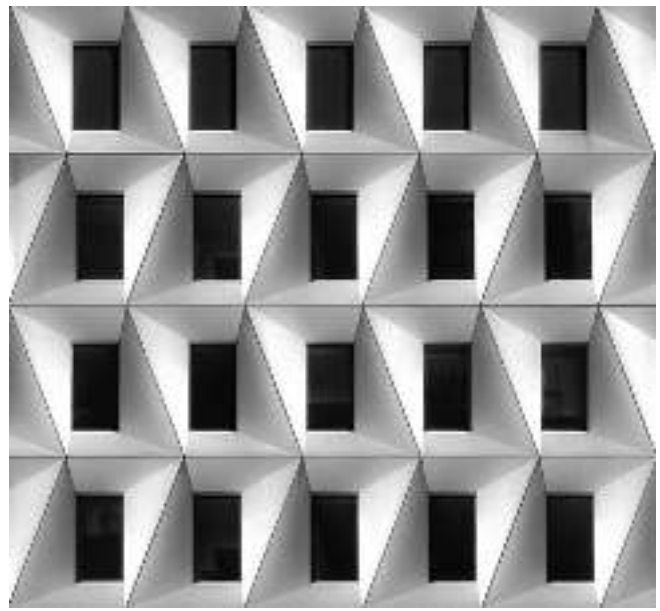
## ***LIGHTWEIGHT SANDWICH PARTITION WALLS***

*To fulfill the basic Indian need of huge urban habitat, it requires innovative, energy efficient GREEN building materials for strong and durable housing in fast-track method of construction at affordable cost. All these concerns have led BUILDMATE to develop an energy efficient and **economical Lightweight prefabricated Sandwich wall Panels** which provides rapid /faster construction and contributes to environmental protection.*



## ***LIGHTWEIGHT CONCRETE FACADES***

*Lightweight Concrete Façade Panels are manufactured offsite - with full flexibility in design and work seamlessly with a wide range of other building materials, enabling easy incorporation. These Environment Friendly high performance, lightweight concrete external façade system will protect and enhance your investment for years to come in all type of construction projects. BUILDMATE Precast Façade Panels can realize all design treatment, from ultra-modern to historically accurate.*



## **PRECAST CONCRETE LINTELS/ SUN SHADES SIL BEAMS/TIE /BOND BEAMS**

*A Lightweight , Cost and Time saving Solution in the walls in residential and commercial buildings of concrete masonry mostly used by the Professional Engineers / Builders . Significant savings in time of form-work makes construction process fast and effecient.*



## **PRECAST CONCRETE STAIRCASE**

*Fast-track Your multi-level construction projects, by incorporating Precast concrete stairs into your design. We can supply individual flights, staircases with integrated landings all designed and manufactured to your exact requirements.*



## **PRECAST CONCRETE BATH- PODS**

*Lightweight Concrete Modular prefabricated bathroom pods are the perfect solution for a variety of developments ranging from student housing, residential buildings, hotels, hospitals etc. These Bath pods can be supplied complete "Turnkey" with systems installation of Electric / Plumbing and all associated bathroom elements. These Precast Pods are :*

- *Factory made under Controlled conditions.*
- *Of superior and consistent quality.*
- *Able to provide Better planning and coordination at site to avoid any delays in site executions.*



### **Buildmate Projects Private Limited**

Sy no. 60,61,62. Gundlapochampally Village Hyderabad, Telangana, India – 500014

Ph no: +91 7675 9899 11/61 Email: [marketing@buildmate.in](mailto:marketing@buildmate.in)